



C O V E B E A C H

# BEVERAGE MENU

*At COVEBEACH, every drink tells part of the story. From refreshing cocktails and premium spirits to curated wines and champagne, our beverage menu is crafted to complement sun-soaked days by the pool and vibrant nights by the sea.*



### CHAMPAGNE BRUT 150ML

|                              |     |
|------------------------------|-----|
| Moët & Chandon Brut Imperial | 175 |
| Moët & Chandon Ice Imperial  | 190 |

### CHAMPAGNE BRUT 75CL

|                                      |      |
|--------------------------------------|------|
| Moët & Chandon Brut Imperial         | 950  |
| Moët & Chandon Ice Imperial          | 1050 |
| Perrier Jouet Belle Epoque           | 2100 |
| Carbon Blanc De Blancs               | 2500 |
| Dom Pérignon Brut                    | 5800 |
| Armand De Brignac Ace of Spades Gold | 7250 |
| Louis Roederer Cristal Brut          | 7500 |

### CHAMPAGNE MAGNUM - BRUT 1.5L

|                                      |       |
|--------------------------------------|-------|
| Moët & Chandon Brut Imperial         | 2300  |
| Moët & Chandon Ice Imperial          | 2350  |
| Perrier Jouet Belle Epoque           | 4500  |
| Carbon Luminus Brut                  | 5400  |
| Dom Pérignon Brut                    | 12500 |
| Armand De Brignac Ace of Spades Gold | 14400 |
| Louis Roederer Cristal Brut          | 14900 |

### CHAMPAGNE JÉROBOAM - BRUT 3L

|                                      |       |
|--------------------------------------|-------|
| Moët & Chandon Brut Imperial         | 7200  |
| Perrier Jouet Gran Brut              | 6000  |
| Armand De Brignac Ace of Spades Gold | 35000 |

### CHAMPAGNE ROSÉ 75CL

|                                      |       |
|--------------------------------------|-------|
| Moët & Chandon Rosé Imperial         | 1300  |
| Moët & Chandon Ice Rosé Imperial     | 1500  |
| Perrier Jouët Blason Rosé            | 1500  |
| Perrier Jouet Belle Epoque Rose      | 3000  |
| Dom Pérignon Rosé                    | 9750  |
| Armand De Brignac Ace of Spades Rose | 10900 |
| Louis Roederer Cristal Rosé          | 12800 |

### CHAMPAGNE MAGNUM - ROSÉ 1.5L

|                                      |       |
|--------------------------------------|-------|
| Moët & Chandon Rosé Imperial         | 3700  |
| Ruinart Rosé                         | 3600  |
| Perrier Jouet Belle Epoque Rose      | 14000 |
| Dom Perignon Rose                    | 25000 |
| Armand De Brignac Ace of Spades Rose | 21000 |

## SPARKLING WINE

|                       | Glass | 75CL |
|-----------------------|-------|------|
| Prosecco Da Luca Brut | 95    | 450  |
| Prosecco Da Luca Rose | 105   | 500  |

## WHITE WINE

|   | Glass | 75CL |
|---|-------|------|
| <b>MICHEL CHAPOUTIER, MARIUS BLANC</b><br><i>Pays d'Oc, France. Vermentino.</i> | 79    | 360  |
| <b>DE BORTOLI</b><br><i>Australia Chardonnay.</i>                               | 100   | 490  |
| <b>UPSIDE DOWN</b><br><i>Marlborough, New Zealand. Sauvignon Blanc.</i>         | 105   | 495  |
| <b>LOUIS LATOUR</b><br><i>Bourgogne, France. Chardonnay.</i>                    | 120   | 550  |

## ROSE WINE

|   | Glass | 75CL | 1.5LT | 3LT  | 6LT  |
|---|-------|------|-------|------|------|
| <b>CHÂTEAU SAINTE MARGUERITE SYMPHONIE</b><br><i>Côtes de Provence, France.<br/>Cinsault, Grenache.</i>                       | 129   | 625  | 1250  |      |      |
| <b>PEARL ROSE</b><br><i>Côtes de Provence de Provence, France.<br/>Cinsault, Grenache.</i>                                    | 95    | 465  |       |      |      |
| <b>CUVEE HENRI FABRE ROSE</b><br><i>Côtes de Provence, France.<br/>Cinsault, Syrah, Grenache.</i>                             | 89    | 395  |       |      |      |
| <b>ULTIMATE PROVENCE ROSE</b><br><i>Côtes de Provence de Provence, France.<br/>Grenache.</i>                                  |       |      | 1500  |      |      |
| <b>MIRAVAL ROSE, COVEBEACH</b><br><i>Côtes de Provence de Provence, France.<br/>Cinsault, Grenache.</i>                       |       |      | 2500  |      |      |
| <b>CHÂTEAU ROMASSAN OTT</b><br><i>Bandol, France.<br/>Syrah, Grenache.</i>  |       |      | 1999  |      |      |
| <b>CHÂTEAU MINUTY CUVÉE 281</b><br><i>Côtes de Provence, France.<br/>Grenache, Syrah, Cinsault</i>                            |       |      | 1899  | 3700 |      |
| <b>CHÂTEAU D'ESCLANS WHISPERING ANGEL ROSÉ</b><br><i>Côtes de Provence, France.<br/>Vermentino Grenache, Cinsault, Syrah.</i> |       | 850  |       | 3250 | 6800 |

## RED WINE

|   | Glass | 75CL |
|---|-------|------|
| <b>MICHEL CHAPOUTIER, MARIUS ROUGE</b><br><i>Pays d'Oc, France. Syrah, Grenache.</i>  | 79    | 360  |
| <b>DE BORTOLI</b><br><i>Australia Shiraz.</i>   | 85    | 395  |
| <b>DE TOREN FUSION V 2017</b><br><i>Stellenbosch. Merlot, Cabernet Sauvignon,<br/>Cabernet Franc, Petit Verdot, Malbec.</i> |       | 880  |

# COVEBEACH FINE PRIVATE CELLAR

## WHITE WINE

---

|   |      |
|---|------|
| <b>CHÂTEAU SMITH HAUT-LAFITTE 2011</b>            | 2680 |
| <i>Pessac-Léognan. Sauvignon Blanc, Sémillon.</i> |      |
| <b>CORTON-CHARLEMAGNE, GRAND CRU</b>              | 3600 |
| <i>France. Chardonnay.</i>                        |      |

## RED WINE

---

### FRANCE

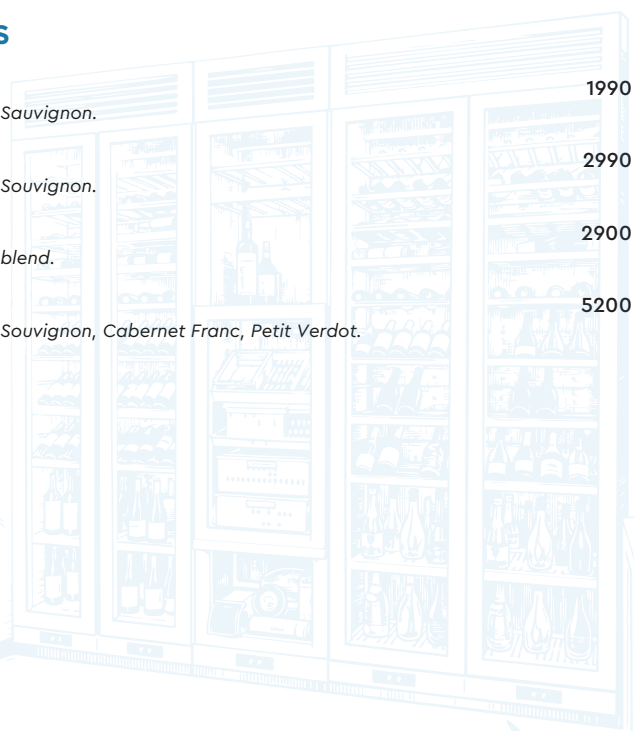
|   |      |
|---|------|
| <b>SÉGLA</b>                            | 1360 |
| <i>Margaux, Cabernet Sauvignon.</i>     |      |
| <b>MICHEL &amp; STÉPHANE</b>            | 1440 |
| <i>Cities Roti, Shiraz/Syrah.</i>       |      |
| <b>CHÂTEAU LASCOMBES 2016</b>           | 1950 |
| <i>Margaux, Merlot.</i>                 |      |
| <b>CHÂTEAU LA PROVIDENCE 2010</b>       | 2800 |
| <i>Pomerol, Cabernet Franc, Merlot.</i> |      |
| <b>CLOS VOUGEOT</b>                     | 2800 |
| <i>Burgundy, Pinot Noir.</i>            |      |

### ITALY

|   |      |
|---|------|
| <b>LUCE</b>   | 2190 |
| <i>Toscana, Merlot</i>  |      |
| <b>BISERNO</b>  | 7200 |
| <i>Toscana, Cabernet Sauvignon, Cabernet Franc, Petit verdot.</i> |      |

### UNITED STATES

|  |      |
|--|------|
| <b>CAKEBREAD</b>   | 1990 |
| <i>Napa Valley, Cabernet Sauvignon.</i>                                |      |
| <b>THE MASCOT</b>  | 2990 |
| <i>Napa Valley, Cabernet Sauvignon.</i>                                |      |
| <b>TUCK</b>  | 2900 |
| <i>Napa Valley, Cabernet blend.</i>                                    |      |
| <b>DOMINUS</b>   | 5200 |
| <i>Napa Valley, Cabernet Sauvignon, Cabernet Franc, Petit Verdote.</i> |      |



## SAKE

Glass(120ml) 75CL

### Premium Japanese Rice Wine

(Best Enjoyed Chilled, Perfect pairing with sushi, seafood and light dishes)

|  |     |      |
|--|-----|------|
| <b>HEAVENSAKE JUNMAI 12</b> <span>Lower Alcohol, Less Calories</span>  | 119 | 675  |
| <i>Light, smooth and refreshing with notes of salted caramel, almond and citrus. A perfect alternative to white wine or rosé.</i>  |     |      |
| <b>HEAVENSAKE JUNMAI GINJO</b> <span>Popular</span>  |     | 950  |
| <i>Elegant and crisp with delicate aromas of melon and green apple. Smooth and refined with a silky finish.</i>                    |     |      |
| <b>HEAVENSAKE JUNMAI DAIGINJO</b> <span>Label Noir</span>  |     | 1550 |
| <i>Exceptional premium sake with floral aromas, tropical fruit and muscat grape notes. Rich, vibrant and beautifully balanced.</i> |     |      |

## VODKA

|  | Glass | Bottle |
|--|-------|--------|
| Tito's                                   | 59    |        |
| Ketel One                                | 65    |        |
| Grey Goose                               | 95    | 2300   |
| Grey Goose 1.5 L                         |       | 4300   |
| Grey Goose Altius                        |       | 5300   |
| Belvedere Cold Brew Organic Vodka        | 75    | 1600   |
| Belvedere Organic Vodka                  | 90    | 2200   |
| Belvedere Gold COVE BEACH EDITION 1.75 L |       | 4200   |
| Belvedere Pure 3 L                       |       | 8000   |
| Belvedere Pure 6 L                       |       | 10,000 |
| Belvedere 10 Luminous                    |       | 5200   |
| Beluga Noble                             | 90    | 2300   |
| Beluga Gold                              | 225   | 5200   |

## GIN

|  | Glass | Bottle |
|--|-------|--------|
| Bombay Sapphire                                    | 59    |        |
| Gin Mare   | 75    | 1600   |
| Star of Bombay                                     | 75    | 1650   |
| The Gardener <span>100% Organic Riviera Dry</span> | 80    | 1750   |
| Monkey 47(50cl)                                    | 110   | 1700   |
| Ki No B  | 99    | 2350   |

## RUM

|                         | Glass | Bottle |
|-------------------------|-------|--------|
| Bacardi Carta Blanca    | 59    |        |
| Bacardi Carta Negra     | 65    |        |
| Bacardi Premium 10 Yo   | 80    | 1800   |
| Bumbu Craft Rum         | 69    | 1600   |
| Plantation Stiggins     | 75    | 1700   |
| Eminente Reserva        | 110   | 2600   |
| Zacapa 23               | 115   | 2700   |
| Dictador 20 YO          |       | 2500   |
| Dictador Aurum GB       |       | 4000   |
| Dictador Sinfonia Pardo |       | 4200   |
| Havana Club 15 Años     |       | 9500   |

## TEQUILA

---

### BLANCO & JOVEN

|                   | <i>Glass</i> | <i>Bottle</i> |
|-------------------|--------------|---------------|
| Astral Blanco     | 69           |               |
| Casamigos Blanco  | 95           | 2250          |
| Don Julio Blanco  | 105          | 2500          |
| Patron El Cielo   | 275          | 5700          |
| Casa Dragon Joven |              | 6400          |

### REPOSADO

|                     | <i>Glass</i> | <i>Bottle</i> |
|---------------------|--------------|---------------|
| Casamigos Reposado  | 110          | 2500          |
| Patron El Alto      | 275          | 5995          |
| Clase Azul Reposado | 295          | 6900          |

### ANEJO & EXTRA ANEJO

|                          | <i>Glass</i> | <i>Bottle</i> |
|--------------------------|--------------|---------------|
| Patron Añejo             | 100          | 2400          |
| LOBOS 1707 Extra Anejo   | 180          | 4200          |
| Avion Cristalino Reserva | 310          | 6995          |

### MEZCAL

|                       | <i>Glass</i> | <i>Bottle</i> |
|-----------------------|--------------|---------------|
| Mezcal Amarás Espadín | 95           | 2100          |
| LOBOS 1707            | 85           | 1900          |

### COGNAC

|                           | <i>Glass</i> | <i>Bottle</i> |
|---------------------------|--------------|---------------|
| Hennessy V.S              | 79           | 1700          |
| Hennessy V.S.O.P          | 105          | 2350          |
| Hennessy XO               | 220          | 4900          |
| Hennessy XO 1.5L          |              | 10,000        |
| Hennessy Paradis          |              | 18,000        |
| Hennessy Paradis Imperial |              | 46,000        |

## WHISKEY

### BLENDED WHISKEY

|                               | Glass | Bottle |
|-------------------------------|-------|--------|
| Dewar's White Label           | 59    |        |
| Chivas Regal 12               | 75    | 1800   |
| Chivas Regal 18               | 150   | 3600   |
| Chivas Regal 25               | 350   | 7900   |
| Chivas Regal Cristal Gold 1 L |       | 3000   |
| JW Black Label                | 75    | 1800   |
| JW Blue Label                 | 310   | 7600   |
| Royal Salute 30 YO (50cl)     |       | 14000  |

### SINGLE MALT WHISKEY

|                       | Glass | Bottle |
|-----------------------|-------|--------|
| Glenmorangie Original | 75    | 1800   |
| Laphroaig 10          | 85    | 1900   |
| Glenfiddich 12        | 90    | 2000   |
| Glenfiddich 18        | 150   | 3350   |
| The Macallan 12       | 125   | 2750   |
| The Macallan 15       | 205   | 4350   |
| The Macallan 18       | 330   | 7100   |

### JAPANESE WHISKEY

|                  | Glass | Bottle |
|------------------|-------|--------|
| Nikka Days 70 cl | 75    | 1695   |
| Hibiki Suntory   | 135   | 2900   |

### AMERICAN WHISKEY

|                             | Glass | Bottle |
|-----------------------------|-------|--------|
| Jack Daniel's Old No.7      | 69    | 1700   |
| Jack Daniel's Single Barrel | 95    | 2250   |
| Woodford Reserve            | 75    | 1800   |

### IRISH WHISKEY

|         | Glass | Bottle |
|---------|-------|--------|
| Jameson | 69    | 1700   |

## BEER

|        | Bottle | Bucket |
|--------|--------|--------|
| Corona | 65     | 315    |
| Peroni | 60     | 290    |
| Asahi  | 60     | 290    |

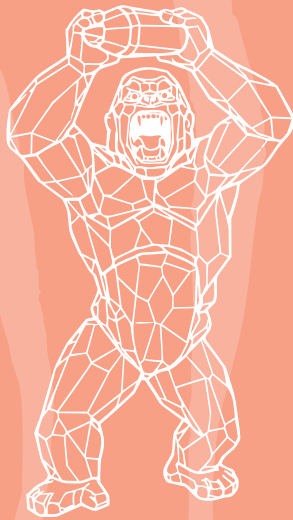
### HARD SELTZER High Water - 5% ABV

Premium Hard Seltzer / Light • Refreshing • Low Calorie

|   | 250ml | Bucket of 3 |
|---|-------|-------------|
| <b>CUCUMBER &amp; MINT</b><br><i>Crisp cucumber, fresh mint.</i>            | 69    | 195         |
| <b>MANGO &amp; PEACH</b><br><i>Juicy mango, soft peach.</i>                 | 69    | 195         |
| <b>LEMON &amp; ELDERFLOWER</b><br><i>Zesty lemon, delicate elderflower.</i> | 69    | 195         |



C O V E B E A C H



# COCKTAIL MENU

*Our cocktail menu at COVEBEACH is crafted to match the rhythm of the coast-vibrant, refreshing, and effortlessly stylish. From signature creations to elevated classics, each cocktail is designed to be enjoyed under the sun, by the pool, or as the music carries the evening into night.*



# COVEBEACH SIGNATURE

## COCKTAILS

- CB WILD KONG** Must Try 85  
*Bacardi Rum shaken with blue curaçao, pure coconut water, Supasawa citrus and sugar cane.*
- MANGO MIRAGE** Guest Favourite 85  
*Bumbu rum blended with ripe mango purée, passion fruit, non dairy creamy coconut and banana essence.*
- SPICY FOX** 85  
*Astral Blanc Tequila mixed with fresh grapefruit, pineapple and lemon juice, agave syrup and red chilli, topped with Brightfox Grapefruit & Ginger.*
- CB SANGRIA** 89  
*Kapuka Sauvignon Blanc and Lillet Blanc with fresh strawberry, blueberry, blackberry fruits, topped with a sparkling wine.*
- EMERALD COAST** Crafted with Red Bull 85  
*Pandan-infused Tito's vodka with house made kaffir lime citrus essence and fresh lemon topped with Red Bull Watermelon.*
- YUZU BASIL SAKE COOLER** 85  
*A refreshing blend of Heaven Sake Junmai 12 and vodka, lifted with muddled basil, bright yuzu, and kaffir-infused sugar cane.*
- COSTA BRAVA** 85  
*Gin infused with rosemary, plum puree, peach puree, and lemon juice.*

## INTERNATIONAL TWIST

- BELLINI ROYALE** 95  
*Hayman's Peach & Rose gin with fresh peach purée and lemon, topped with Moët Chandon Impérial Brut Champagne.*
- PIÑA COLADA PARADISE** 89  
*Bacardi Rum Vanilla infused and Malibu Rum with pineapple juice and coconut cream.*
- ESPRESSO LATTE MARTINI** Must Try 80  
*Belvedere Cold Brew Organic Vodka shaken with Kahlúa, OAT milk, vanilla and fresh espresso.*
- AMALFI OLD FASHIONED** 80  
*Makers Mark bourbon stirred with banana liqueur, demerara sugar, Angostura bitters. Presented with smoke from natural dry citrus peels and cinnamon bark.*
- SMOKED PEACH GINGER SOUR** Must Try 80  
*Whisky infused with smoked ginger, balanced with peach, fresh lemon and house made aromatic bitters, finished with toasted ginger and natural ginger smoke.*
- WATERMELON PALOMA** Popular 85  
*El Jimador Tequila mixed with fresh watermelon juice, grapefruit, lemon and agave, finished with refreshing soda.*
- BUTTERFLY BASIL SMASH** 85  
*Hayman's gin shaken with St-Germain elderflower, fresh lemon, green grapes and fresh basil leaves.*
- SAKE LYCHEE MARTINI** 85  
*Light, elegant, and subtly sweet, with Heaven Sake Junmai 12 and lychee shaken into a silky martini with a soft tropical touch.*

## SPRITZ COLLECTION

Crafted with High Water

- 
- DRAGON BLOOM SPRITZ** 89  
*A vibrant tropical spritz with St-Germain elderflower, fresh dragon fruit purée and a touch of sugar cane, topped with High Water seltzer and sparkling wine.*
- APEROL TROPICAL SPRITZ** 89  
*A sun-kissed spritz blending Aperol with mango purée and High Water Mango & Peach, topped with Sparkling wine.*
- HUGO GARDEN SPRITZ** 89  
*A crisp and refreshing blend of St-Germain elderflower, fresh lemon and High Water Cucumber & Mint, topped with Sparkling wine.*

## MOCKTAILS

Fresh • Non-Alcohol

- 
- PINE IT UP** 45  
*Blended Mango, Coconut, Pineapple.*
- DRAGON PEAR SPRITZ** 45  
*Dragon fruit, pineapple, lemon juice, pear essence, topped with soda.*
- FOXY MOJITO** 45  
*Lemongrass, Mint, Green Apple Juice, Lemon Juice, Agave, Brightfox Cucumber & Mint.*



## NATURAL ELECTROLYTE HYDRATION

---

|   |  |    |
|---|--|----|
| Brightfox Grapefruit & Ginger Sparkling | Zero Calories                                      | 29 |
| Brightfox Cucumber & Mint Sparkling     | Zero Calories                                      | 29 |
| 100 Coconut                             | Pure Coconut Water, No Preservative, Less Calories | 35 |

## WATER

---

|                      |    |
|----------------------|----|
| Eira Still 500ml     | 32 |
| Eira Sparkling 500ml | 32 |

## FRESH JUICES

---

|                         |    |
|-------------------------|----|
| Fresh Orange Juice      | 30 |
| Fresh green apple juice | 30 |
| Fresh Watermelon Juice  | 35 |

## ENERGY DRINK

---

### RED BULL

|              |                           |    |
|--------------|---------------------------|----|
| Original     | 45                        |    |
| Sugar-Free   | 45                        |    |
| Coconut      | 45                        |    |
| Watermelon   | 45                        |    |
| Blueberry    | 45                        |    |
| El Tony Mate | Natural Mate Energy Drink | 40 |

## SOFT DRINKS

---

|                 |    |
|-----------------|----|
| Coca-Cola       | 30 |
| Coca-Cola Light | 30 |
| Sprite          | 30 |
| Sprite Light    | 30 |
| Fanta           | 30 |

## COFFEE (DAIRY-FREE OPTIONS AVAILABLE)

---

|                 |    |
|-----------------|----|
| Espresso        | 20 |
| Double espresso | 30 |
| Americano       | 30 |
| Macchiatto      | 35 |
| Cappuccino      | 40 |
| Caffé Latte     | 40 |
| Spanish Latte   | 45 |

## ICED SELECTION (DAIRY-FREE OPTIONS AVAILABLE)

---

|  |    |
|--|----|
| Cold-Brew Coffee                         | 40 |
| Iced Latte                               | 40 |
| Iced Spanish Latte                       | 45 |
| Iced Matcha Latte                        | 45 |
| Iced Mango Matcha Latte <b>Must Try</b>  | 49 |
| Iced Banana Matcha Latte <b>Must Try</b> | 49 |

## TEA SELECTION (BY AVANTCHA)

---

### WHITE TEA

|            |    |
|------------|----|
| Rose White | 35 |
|------------|----|

### BLOOMING TEA

|               |    |
|---------------|----|
| Jasmine Bloom | 40 |
|---------------|----|

### JAPANESE GREEN TEA

|                |    |
|----------------|----|
| Organic Matcha | 40 |
|----------------|----|

### GREEN TEA

|                       |    |
|-----------------------|----|
| Organic Moroccan Mint | 35 |
|-----------------------|----|

### BLACK TEA

|                           |    |
|---------------------------|----|
| Organic English Breakfast | 35 |
| Oriental Moments          | 35 |

### HERBAL AND FRUIT INFUSIONS

|                          |    |
|--------------------------|----|
| Organic Chamomile Cooler | 35 |
| Organic Natural Rooibos  | 35 |
| Organic Ginger Breeze    | 35 |





C O V E B E A C H

